

Two MADRIGALS for 4-part choir

of 8, 12, or 16 voices

text by: William Shakespeare

composed by: BRUCE SHAVERS

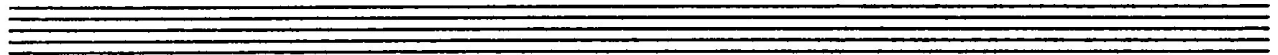
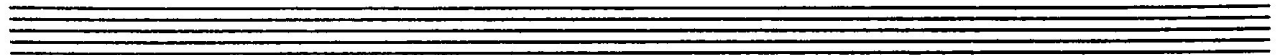
© 1979

mixed feelings of sadness
and anger (fairly slow)

MADRIGAL (I)

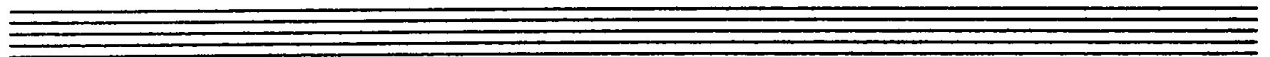
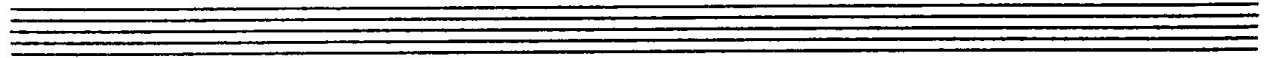
1

Musical score for Soprano, Alto, Tenor, and Bass, measures 1-4. The score is in 3/4 time with a key signature of one flat (B-flat). The lyrics are: "Take O' take those lips a way a". The Soprano part begins with a piano (p) dynamic and a hairpin crescendo. The Alto part begins with a piano (p) dynamic and a hairpin crescendo. The Tenor part begins with a piano (p) dynamic and a hairpin crescendo. The Bass part begins with a piano (p) dynamic and a hairpin crescendo. The lyrics are: "Take O' take those lips a way a".



Musical score for Soprano, Alto, Tenor, and Bass, measures 5-8. The score is in 3/4 time with a key signature of one flat (B-flat). The lyrics are: "way That so sweet ly were". The Soprano part begins with a piano (p) dynamic and a hairpin crescendo. The Alto part begins with a piano (p) dynamic and a hairpin crescendo. The Tenor part begins with a piano (p) dynamic and a hairpin crescendo. The Bass part begins with a piano (p) dynamic and a hairpin crescendo. The lyrics are: "way That so sweet ly were".

Musical score for the first system, measures 10-13. It consists of four staves. The lyrics are: "for — sworn" (measures 10-11) and "And those eyes" (measures 12-13). The notation includes treble clefs, a key signature of one sharp (F#), and dynamic markings such as *f* and *ff*. A circled measure number "10" is present above the first staff. Slurs and hairpins are used to indicate phrasing and dynamics.



Musical score for the second system, measures 14-17. It consists of four staves. The lyrics are: "the break of day" (measures 14-15) and "Lights that do mis — lead morn" (measures 16-17). The notation includes treble clefs, a key signature of one sharp (F#), and dynamic markings such as *f* and *ff*. A circled measure number "15" is present above the first staff. Slurs and hairpins are used to indicate phrasing and dynamics.

Handwritten musical score for the first system. It consists of four staves: a vocal line and three piano accompaniment staves. The vocal line has lyrics: "But my kiss — es Bring a — gain". The piano accompaniment includes a bass line and two treble staves. Dynamics include *mp* and *mf*. There are slurs and a circled "20" above the vocal line. The piano part has a *mp* dynamic and the word "Bring" written below the staff.

Empty musical staff.

Empty musical staff.

Handwritten musical score for the second system. It consists of four staves: a vocal line and three piano accompaniment staves. The vocal line has lyrics: "Seals of love but a — gain". The piano accompaniment includes a bass line and two treble staves. Dynamics include *mp*, *pp*, and *f*. There are slurs and a crescendo hairpin above the piano part. The piano part has the word "a — gain" written below the staff.

Handwritten musical score for the first system, measures 25-28. The score is written on four staves (Soprano, Alto, Tenor, Bass). The lyrics are: "seal'd in vain" (measures 25-26), "seal'd in vain" (measures 27-28). The music is in treble clef with a key signature of one sharp (F#). Measure 25 starts with a circled number 25 and a dynamic marking of *mp*. Measures 27 and 28 have dynamic markings of *mp* and *p* respectively. There are slurs and accents over the notes.

Two empty musical staves, one for Soprano and one for Alto.

Two empty musical staves, one for Tenor and one for Bass.

Handwritten musical score for the second system, measures 29-32. The score is written on four staves (Soprano, Alto, Tenor, Bass). The lyrics are: "but my kiss — es" (measures 29-30), "bring a — gain" (measures 31-32). The music is in treble clef with a key signature of one sharp (F#). Measure 29 starts with a circled number 30 and a dynamic marking of *mp*. Measure 31 has a dynamic marking of *mf*. There are slurs and accents over the notes.

Handwritten musical score for the first system. It consists of four staves: a vocal line and three piano accompaniment staves. The vocal line has lyrics: "but seal'd in vain" in the first measure, "of love" in the second, and "in vain" in the third. Performance markings include "f rit" above the first measure, a circled "35" above the second measure, and "original tempo" above the third measure. The piano accompaniment includes chords and melodic lines corresponding to the vocal parts.

A single empty musical staff with a treble clef and a key signature of one flat.

A single empty musical staff with a treble clef and a key signature of one flat.

(in strict time)

Handwritten musical score for the second system, consisting of three piano accompaniment staves. The first measure is marked "mp" and the second "pp". The third measure is marked "ppp". The lyrics "in vain" are written under the notes in each measure. The piano accompaniment includes chords and melodic lines.

MADRIGAL (II)

LIVELY (bouncy and cheerful)

Sop.

Alto

Ten. *f*
Tell me where is Fan-cy bred Tell me tell me Tell

Bass *f*
Tell me where is Fan-cy bred Tell

Ten. ⑤
me where where is Fan-cy bred Tell me where is Fan-cy

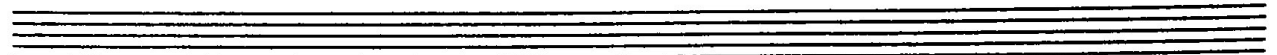
Bass
me where is Fan-cy bred tell me Tell me where is Fan-cy

⑩ *f*
bred or in the heart or in the head Tell me or in the

bred or in the heart heart or in the

head heart or head How be - got

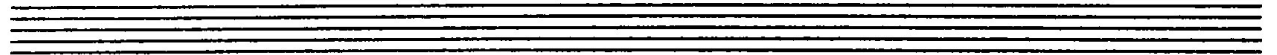
head heart or head How be - got How nou



How nou - rished nou rished How now Re - ply re - ply

rished How how nou rished How now Re - ply

Poco Rit + Dim.



Sop. It is en - gen - der'd in the eyes with ga - zing fed

Alto It is en - gen - der'd in the eyes with ga - zing

Ten.

Bass

Light and Flowing (♩ = ♪) 20

Sop. And Fan - cy dies in the cra - dle where it lies

Alto fed And Fan - cy dies in the

(25) Rit & Dim

pp in the cra - dle

cra - dle where it lies

original tempo (♩ = ♩)

Sop.

Alto Yes Let us all

Ten.

Bass f Let us all ring Fan - cy's knell Ring

30

Ring ring ring

Fan - cy's

Knell

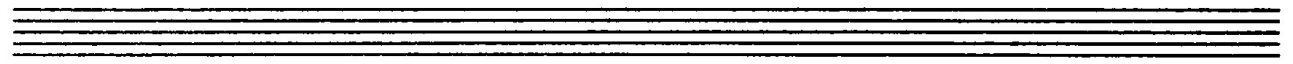
Ding Dong

Knell

Ring

Fan - cy's

Knell



35

Let us all ring the

Knell Let us ring the

Knell Fan - cy's

Let us all ring the

Knell Let us ring the

Knell Fan - cy's

Let us all ring the

Knell Let us ring the

Knell Fan - cy's

Let us all ring the

Knell Let us ring the

Knell Fan - cy's

Knell

Knell

Knell

Knell

solo Tenor (shouted with enthusiasm)

YES! And I'll begin it!

(40)

2/4

2/4

2/4

2/4

soloist alone

other Tenors join in

mf Ding dong bell

mf Ding

Ding dong bell

Ding dong bell

Ding dong bell

Ding dong bell

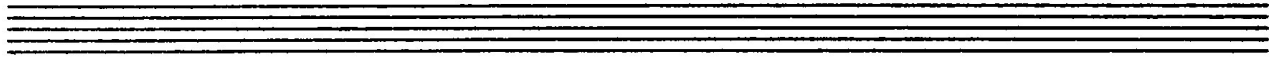
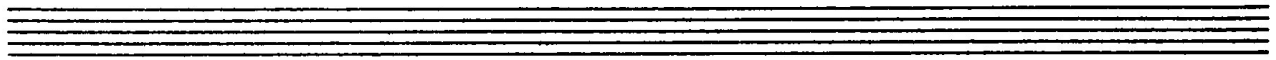
(45)

Let us all ring Fan-cy's Knell

Dong Ding dong Ding dong Ding dong Ding

Ding dong bell Ding dong bell Ding dong bell Ding dong bell

Detailed description: This musical system consists of four measures. The top staff is a vocal line starting with a forte 'f' dynamic. The lyrics are 'Let us all ring Fan-cy's Knell'. The second staff is a vocal line with lyrics 'Dong Ding dong Ding dong Ding dong Ding'. The third staff is a piano accompaniment line with lyrics 'Ding dong bell' repeated. The bottom staff is a bass line.



La la la-la-la-la Ding dong bell La la la-la-la-la Ding dong

dong Ding dong Ding dong Ding dong Ding

Ding dong bell Ding dong bell Ding dong bell Ding dong bell

Fan-cy's Knell Ding dong bell

Detailed description: This musical system consists of four measures. The top staff is a vocal line with lyrics 'La la la-la-la-la Ding dong bell La la la-la-la-la Ding dong'. The second staff is a vocal line with lyrics 'dong Ding dong Ding dong Ding dong Ding'. The third staff is a piano accompaniment line with lyrics 'Ding dong bell' repeated. The bottom staff is a bass line with lyrics 'Fan-cy's Knell Ding dong bell'.

50

bell Let us all ring Fan-cy's Ding dong bell Let us
dong Ding dong Ding dong Ding dong Let us
Ding dong bell Ding dong bell Ding dong bell Let us Let us
La la la-la-la-la la-la-la-la Ding dong bell Ding dong bell Let us

51

SLOW

ring Fan-cy's Knell
ring Fan-cy's Knell
ring Fan-cy's Knell
ring Fan-cy's Knell